



NCD Status Guide

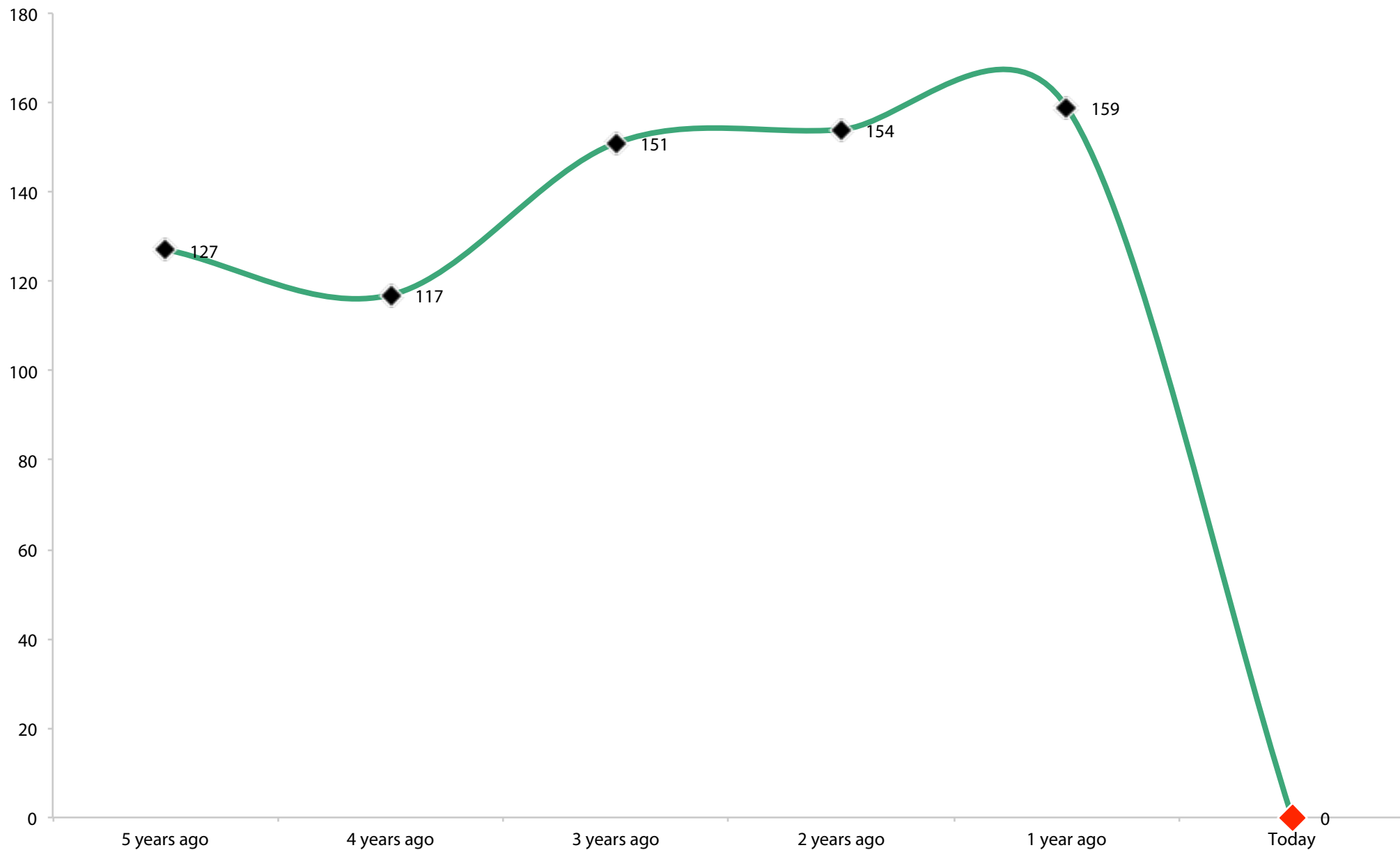
The Salvation Army Mississauga Community Church

April 2026

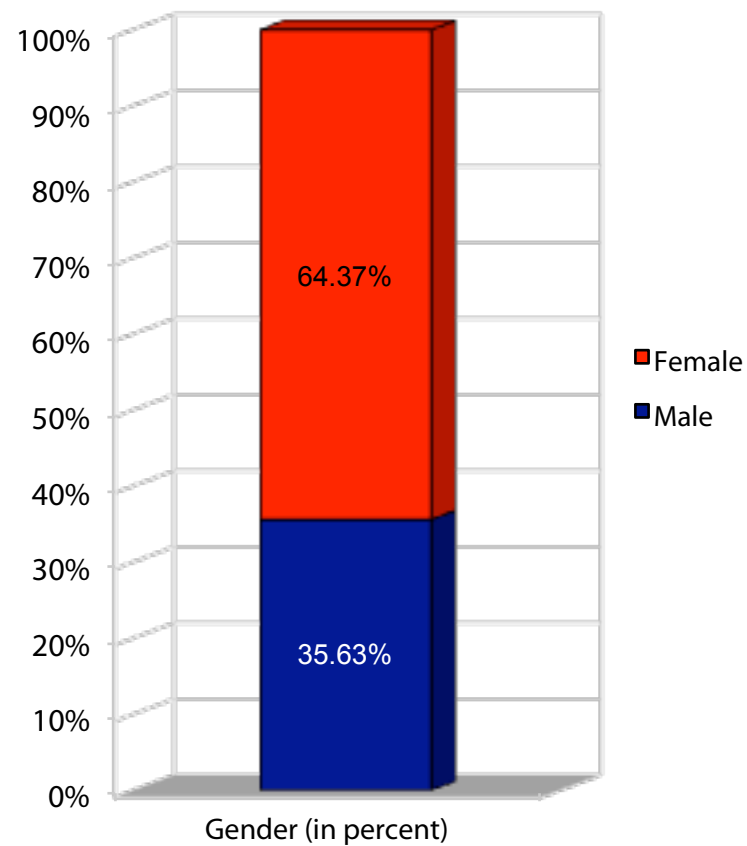
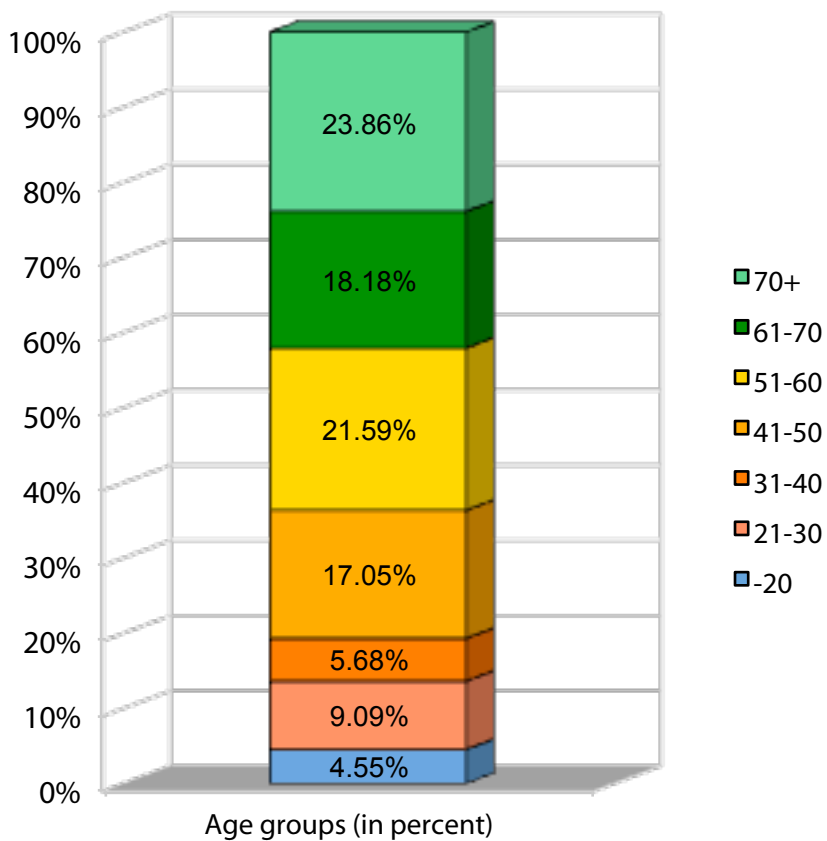
Pastor: Majors Jeff and Graciela Arkell

Profile	Date	Minimum Factor	Maximum Factor	Min-Max Difference	Average
2	Apr 2026	59 Loving Relationships	79 Need-oriented Evangelism	20	67
				Change 1 - 2	+11
1	Oct 2024	48 Effective Structures	67 Need-oriented Evangelism	19	56

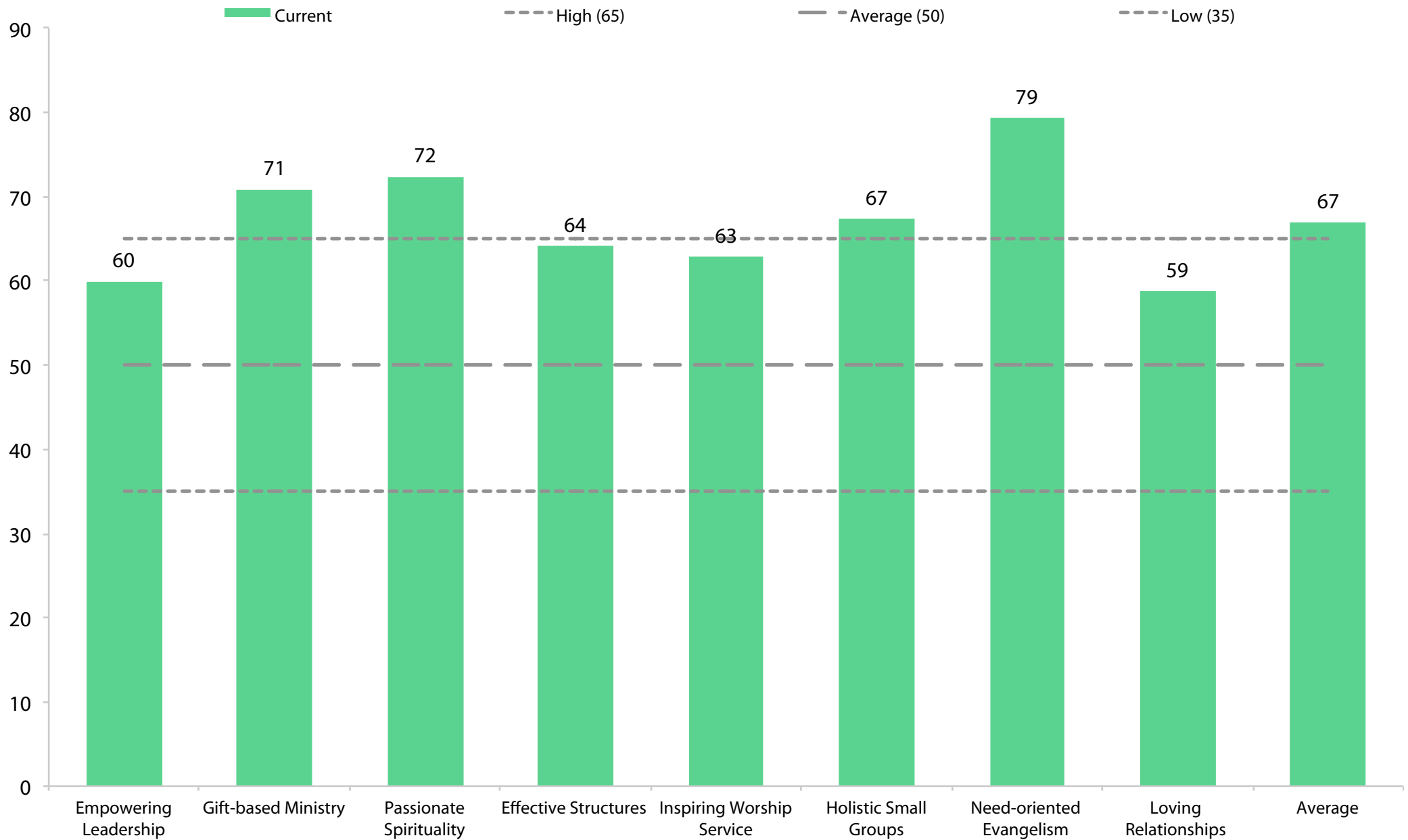
Adult attendance growth



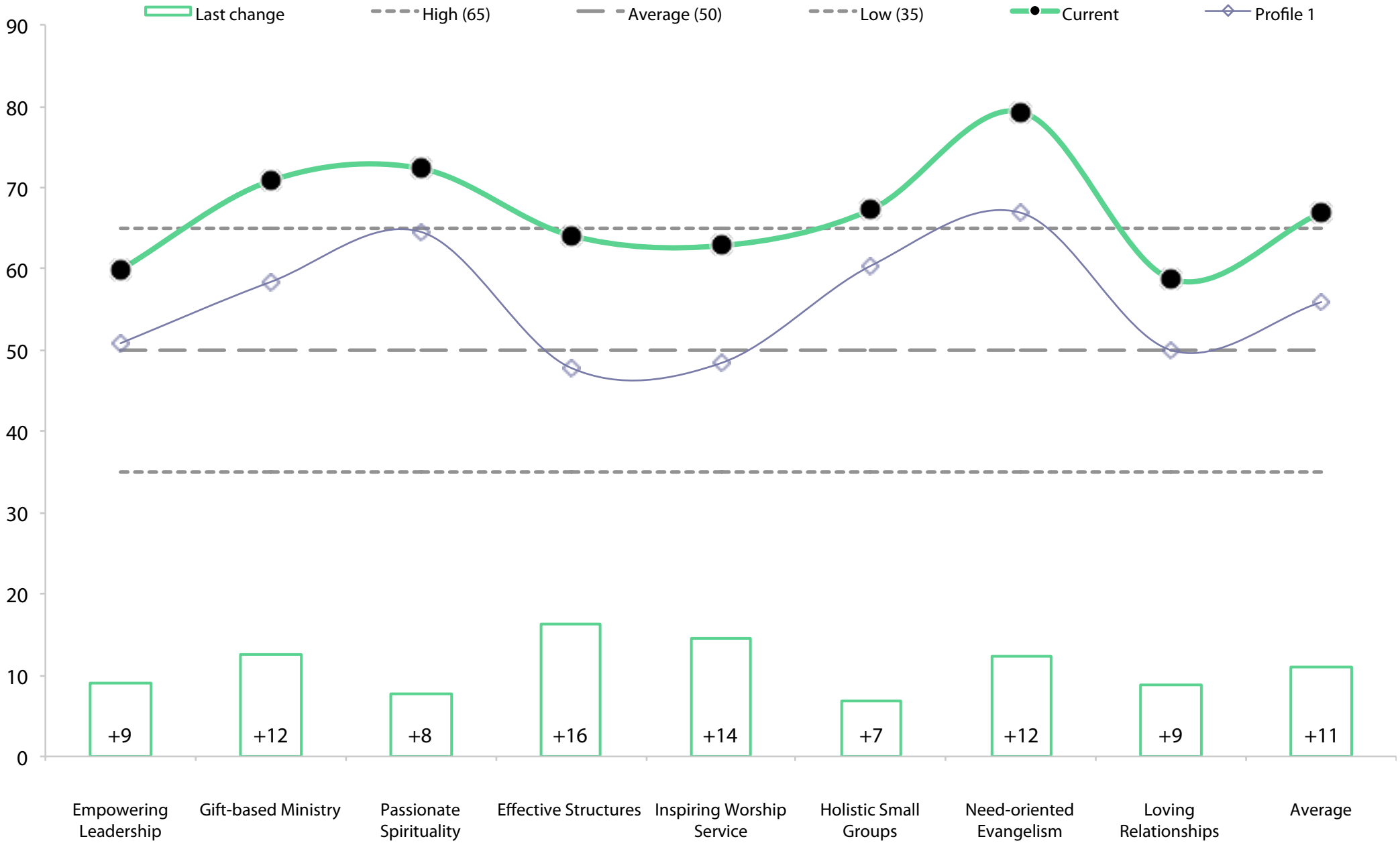
Survey participants by age groups and gender



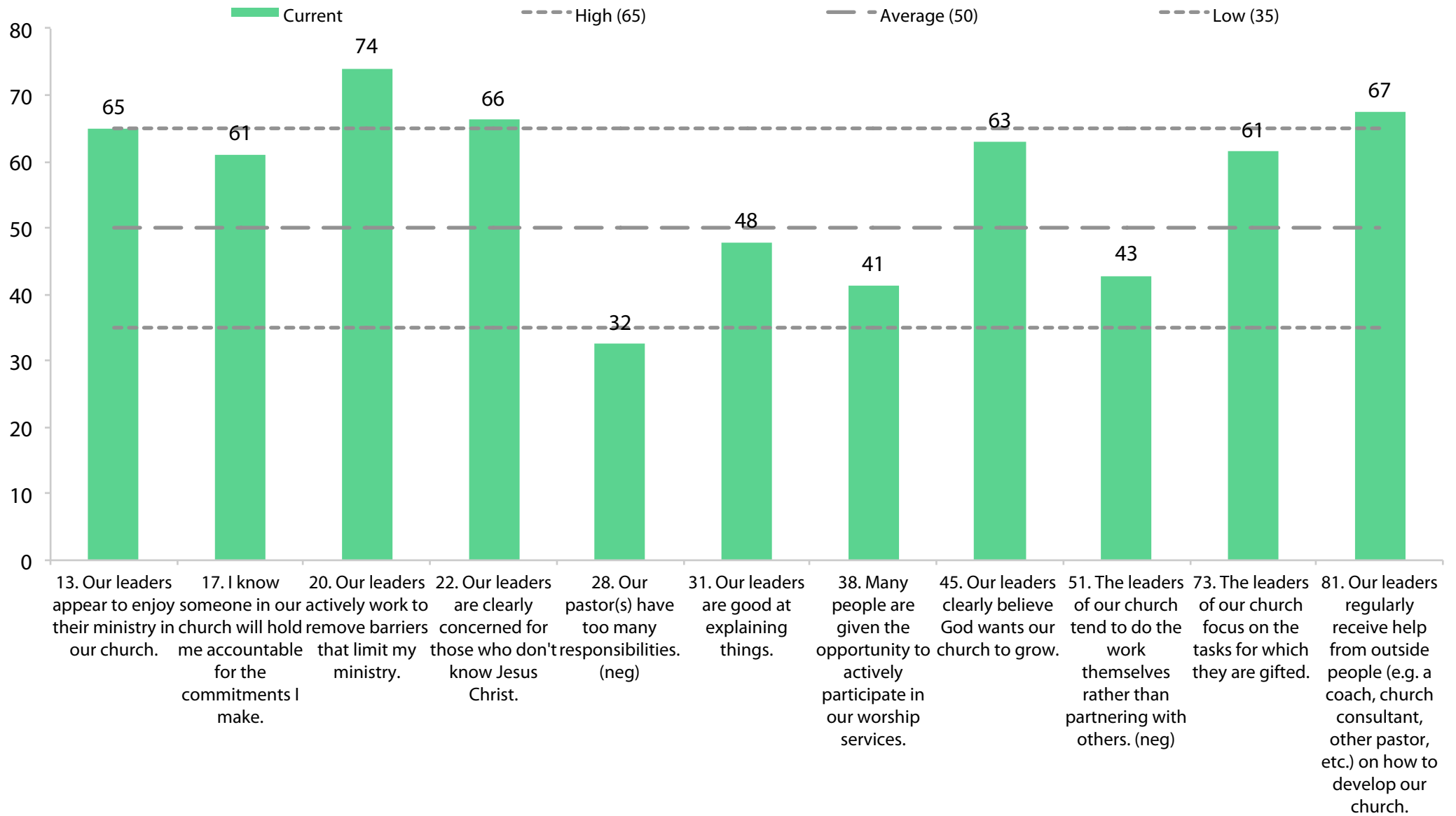
Quality characteristic current profile



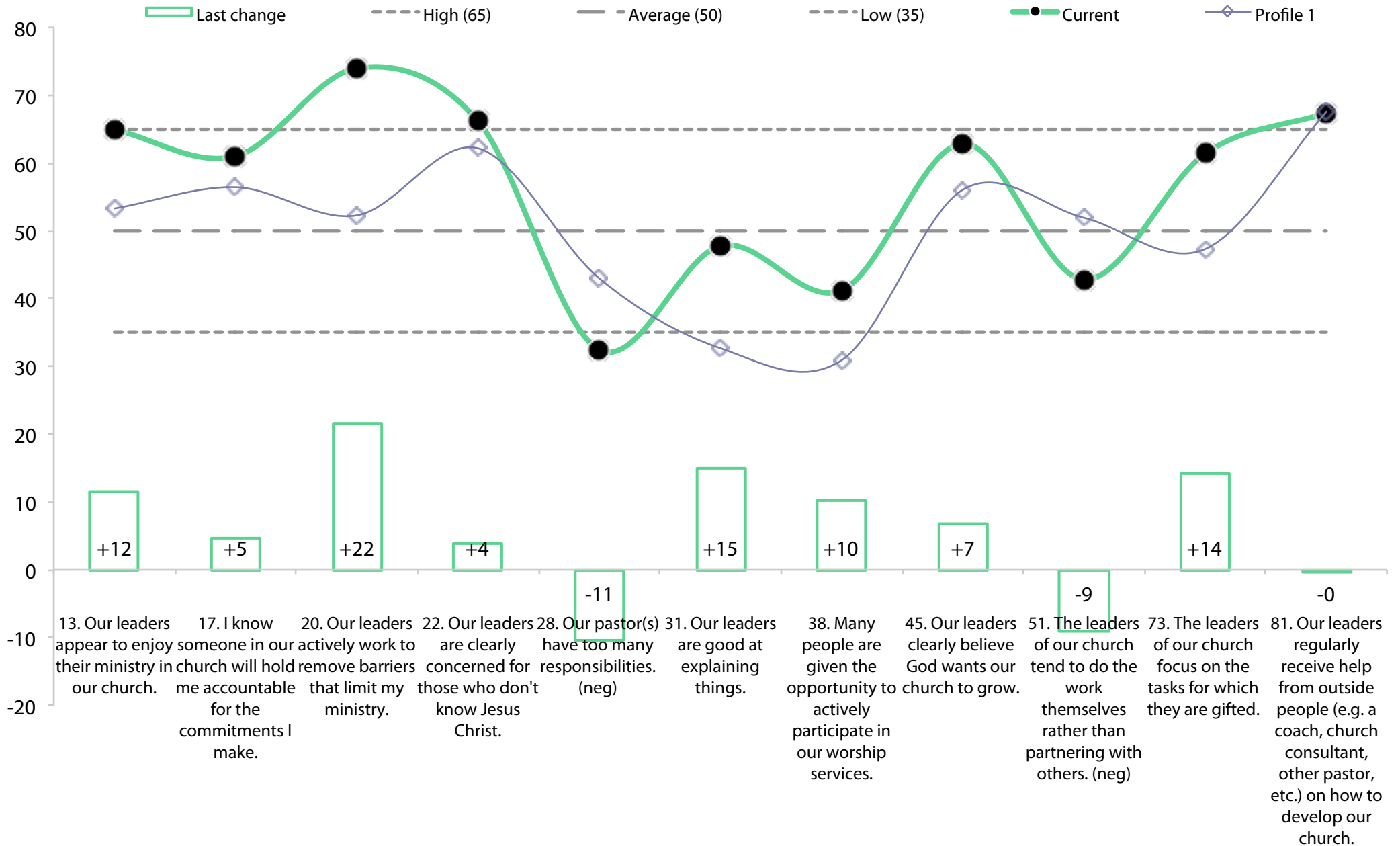
Dynamic progress



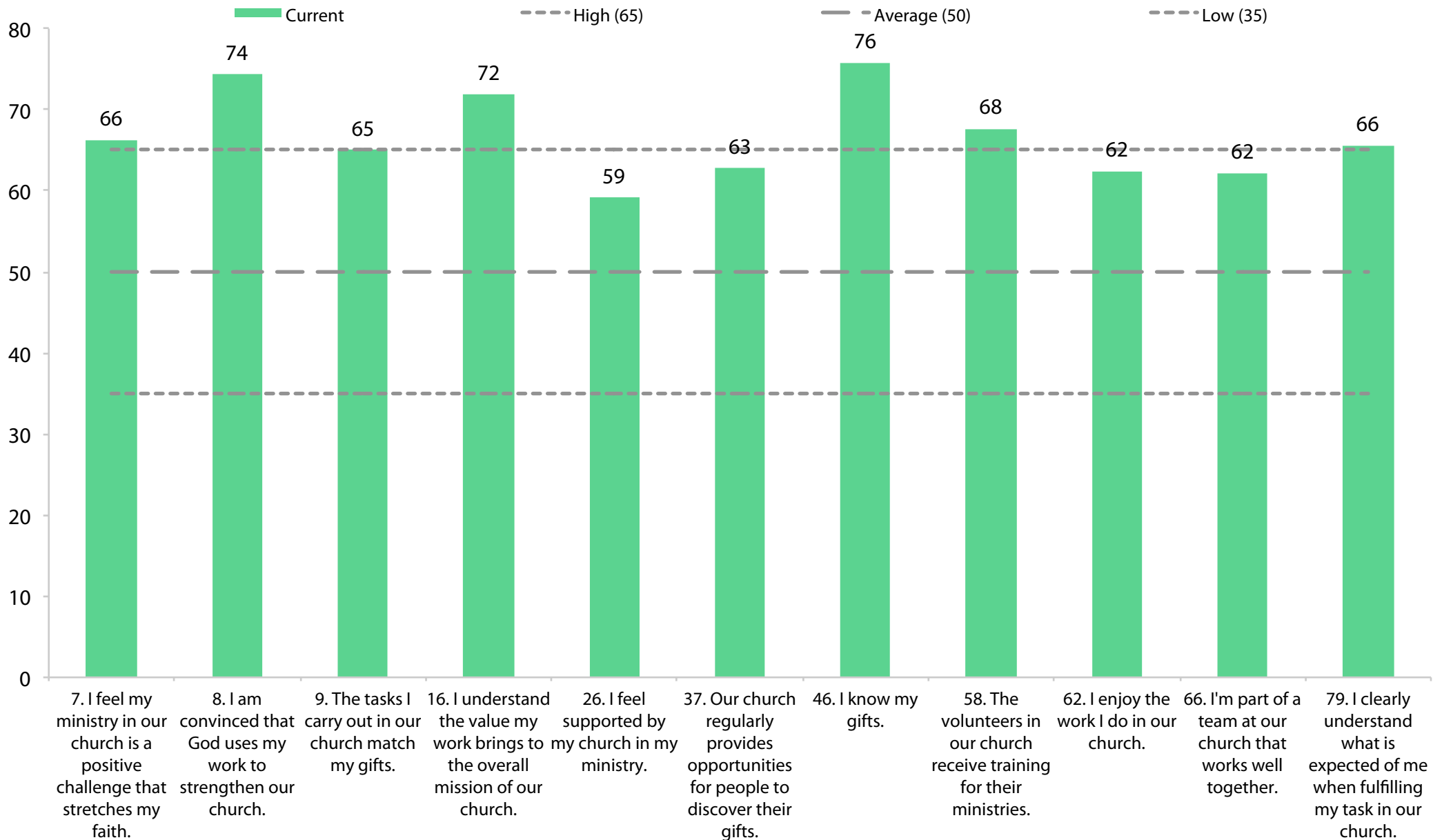
Empowering Leadership Current Profile



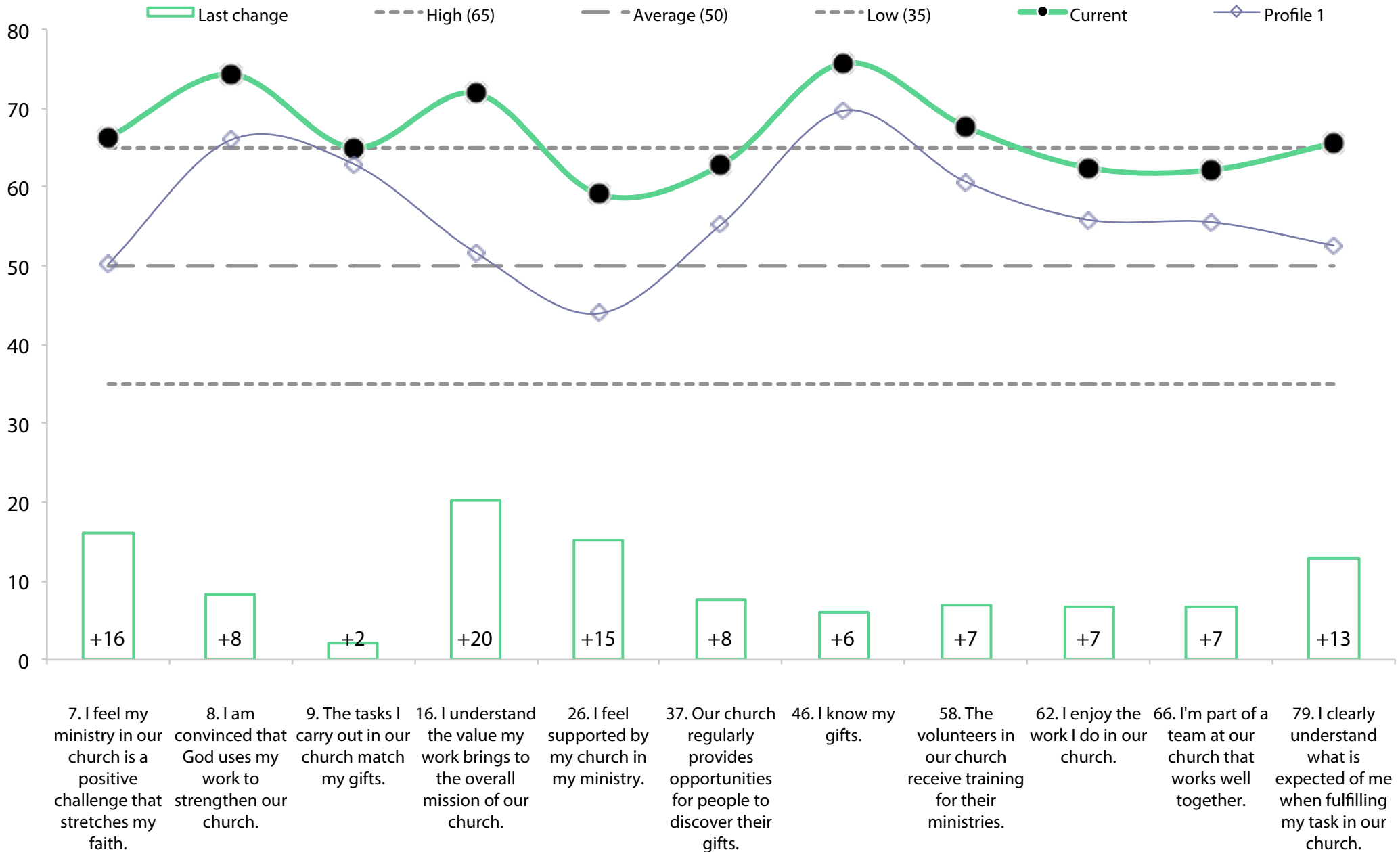
EL Dynamic progress



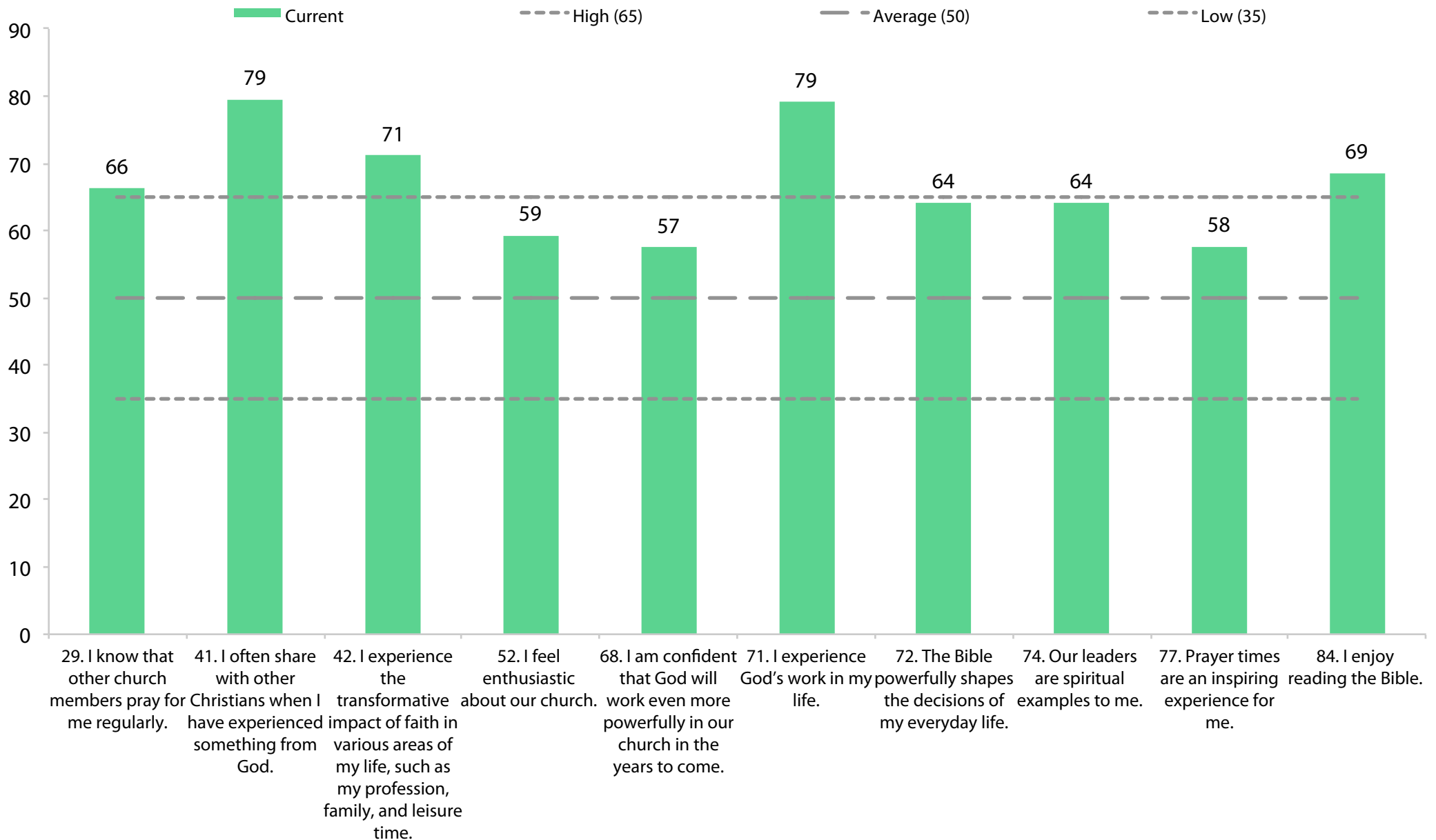
Gift-based Ministry Current Profile



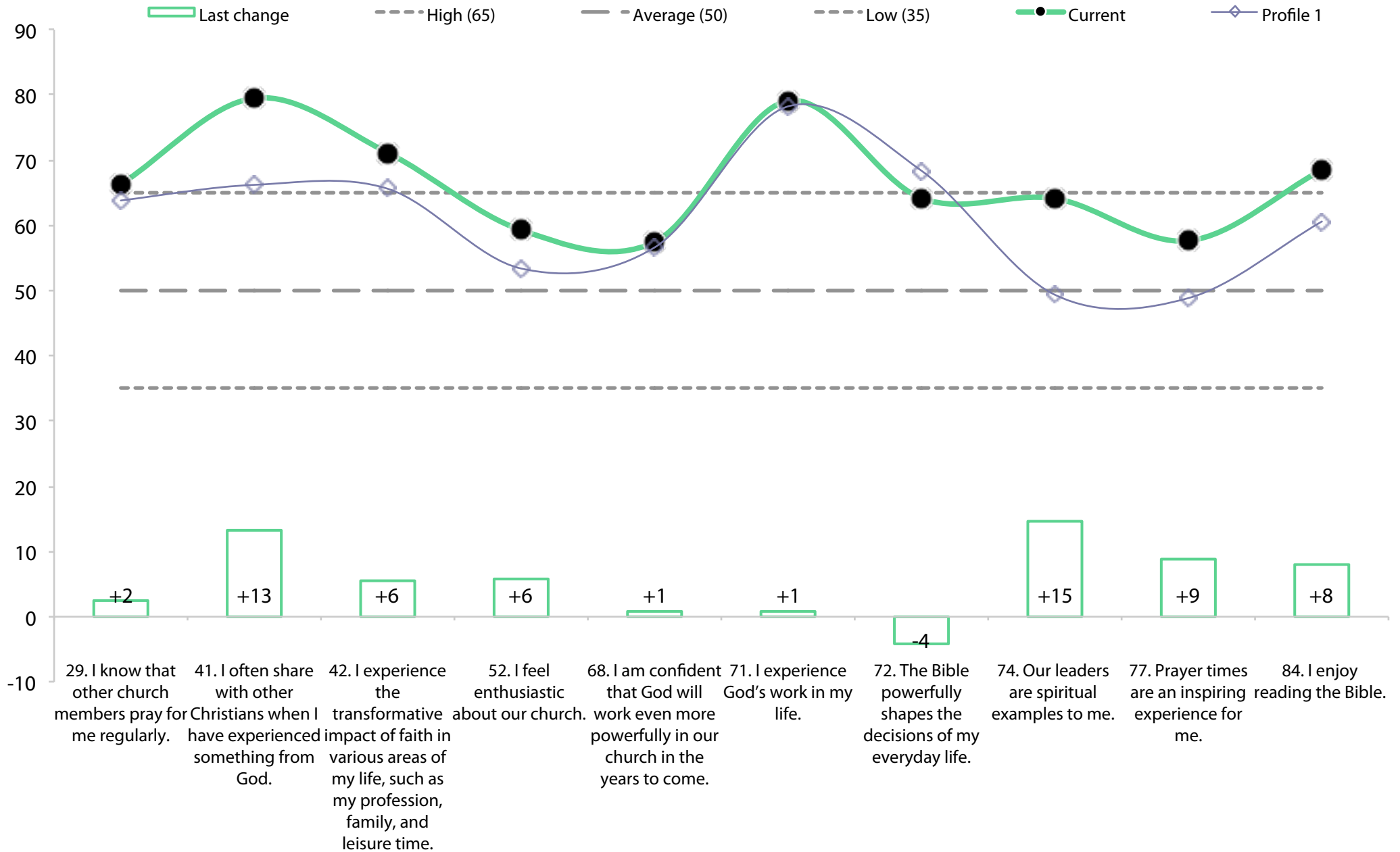
GbM Dynamic progress



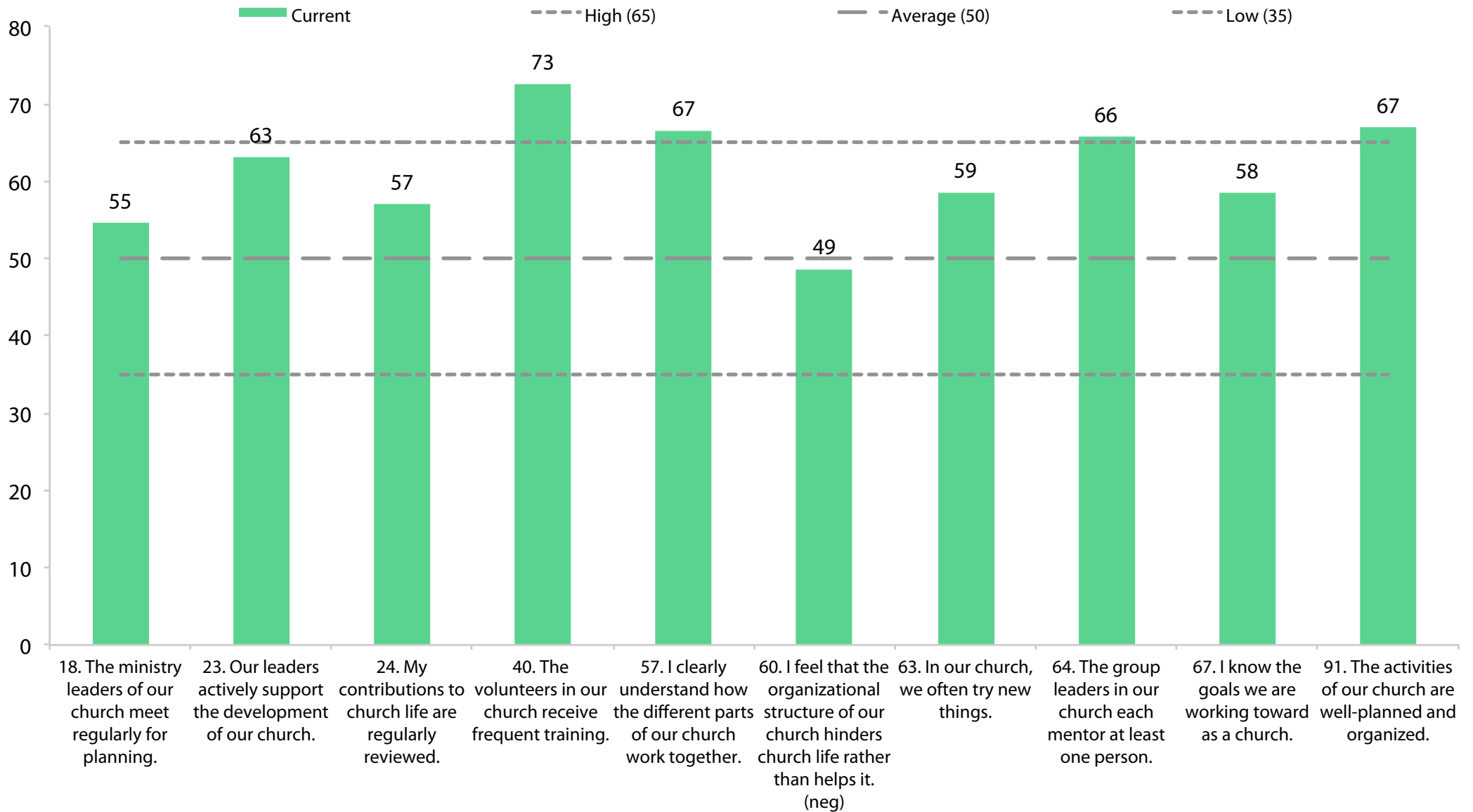
Passionate Spirituality Current Profile



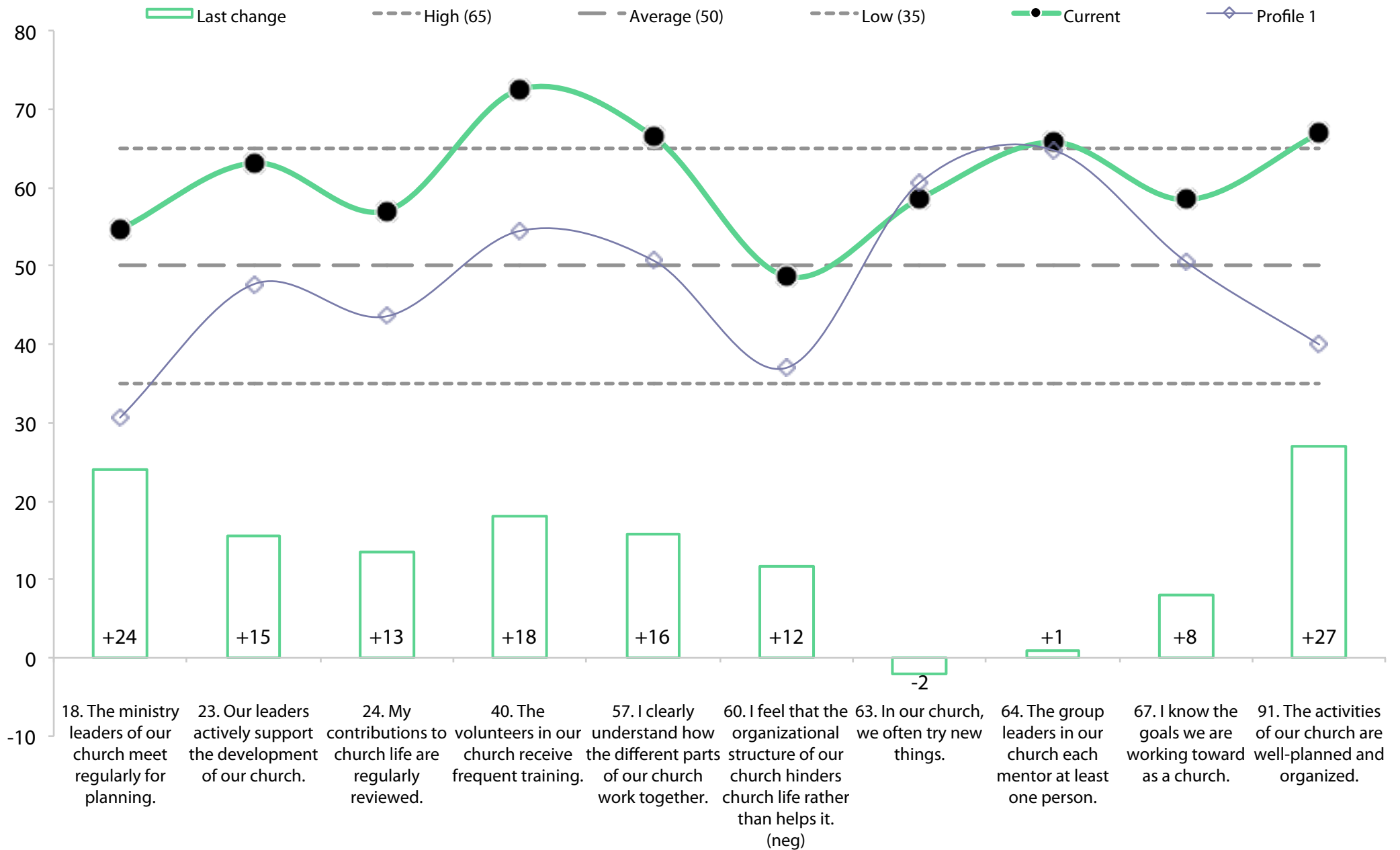
PS Dynamic progress



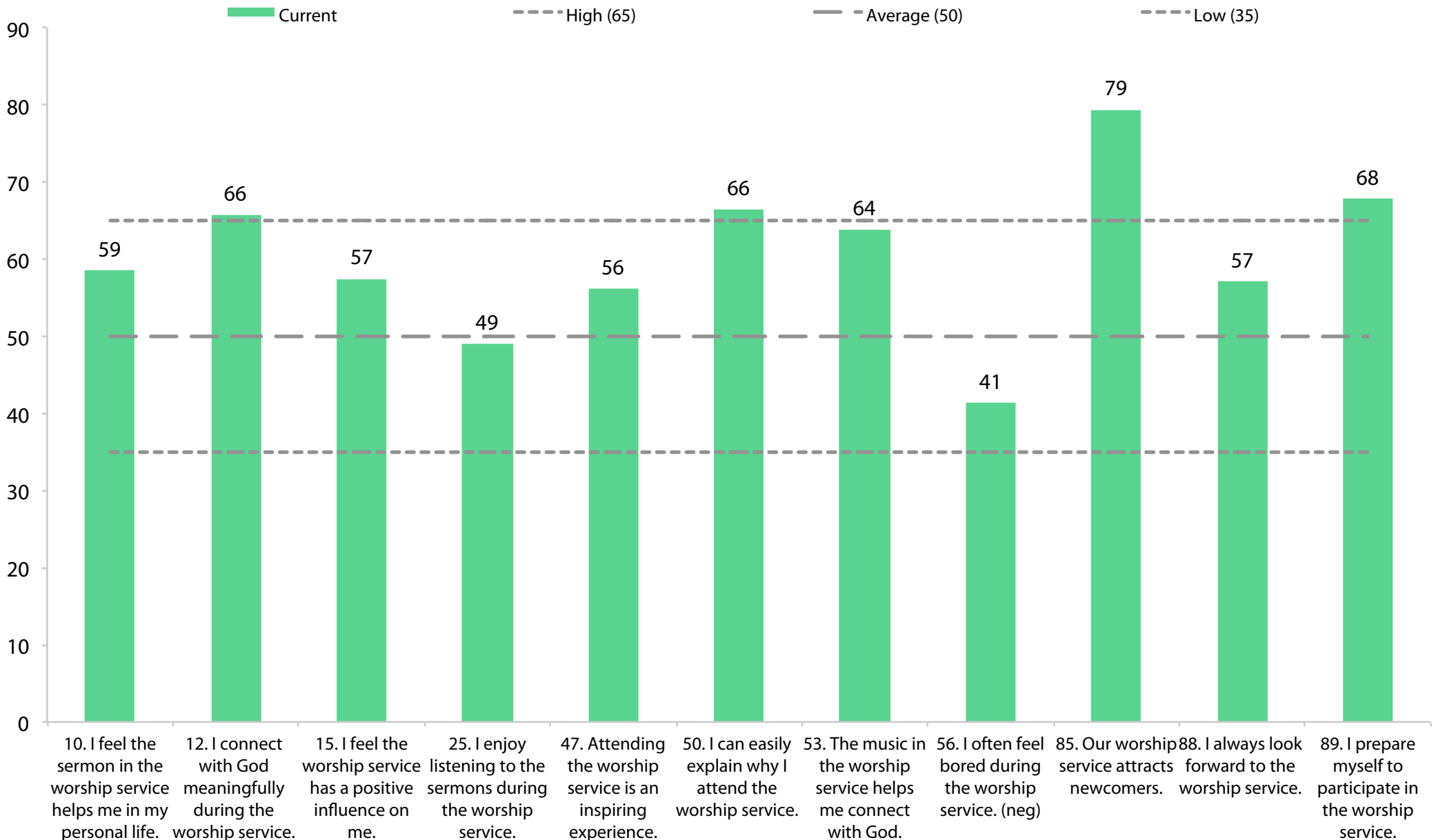
Effective Structures Current Profile



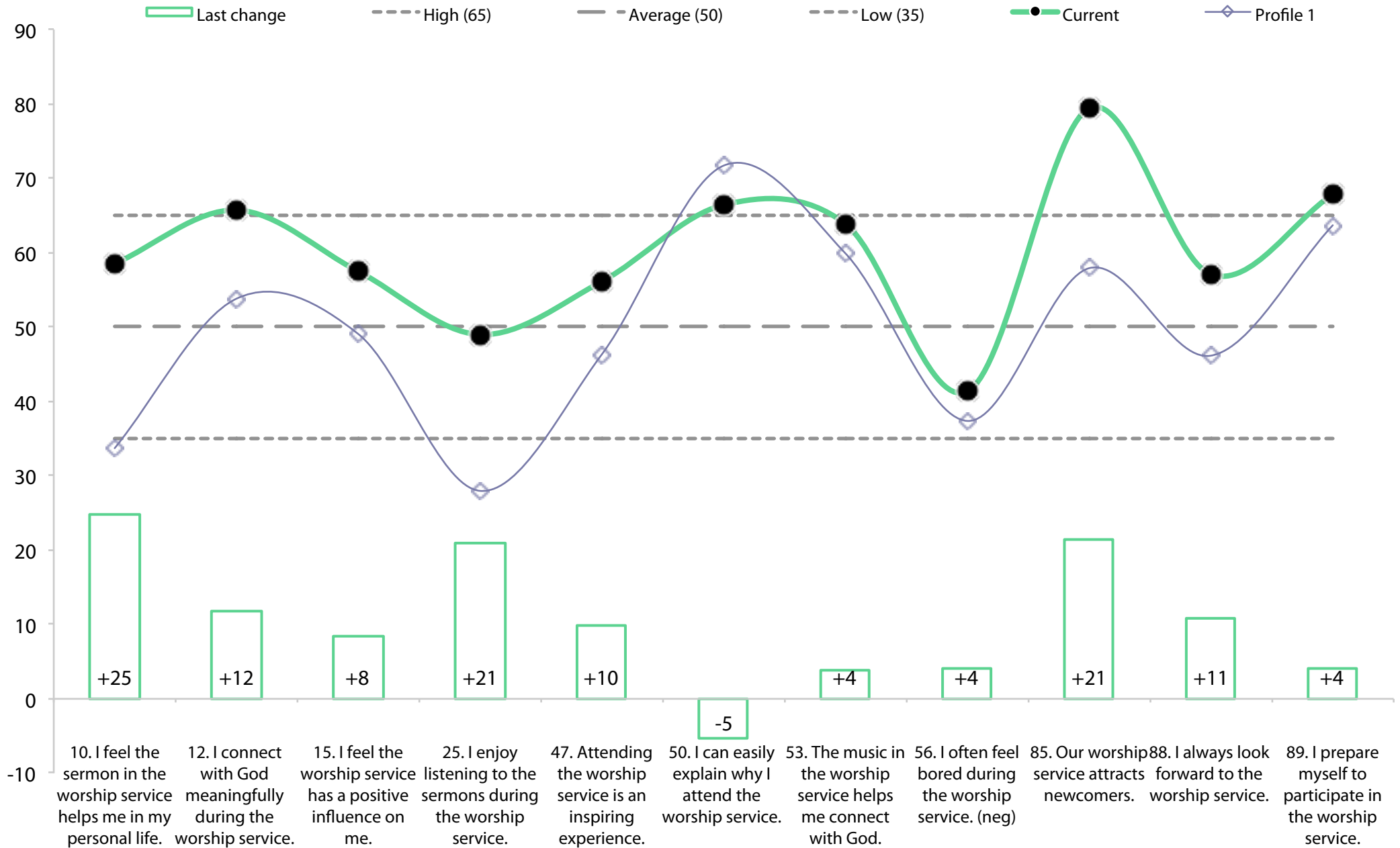
ES Dynamic progress



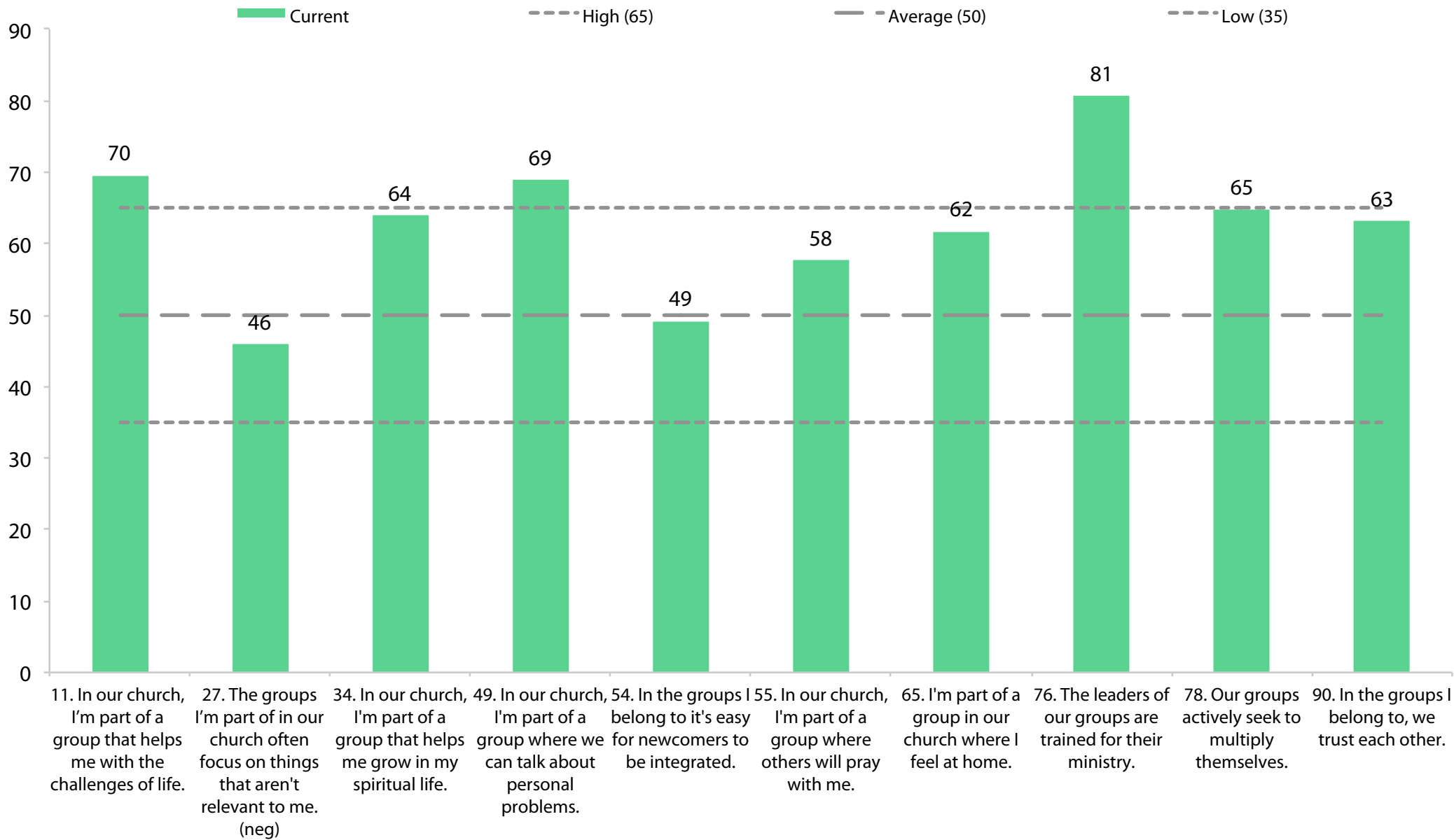
Inspiring Worship Service Current Profile



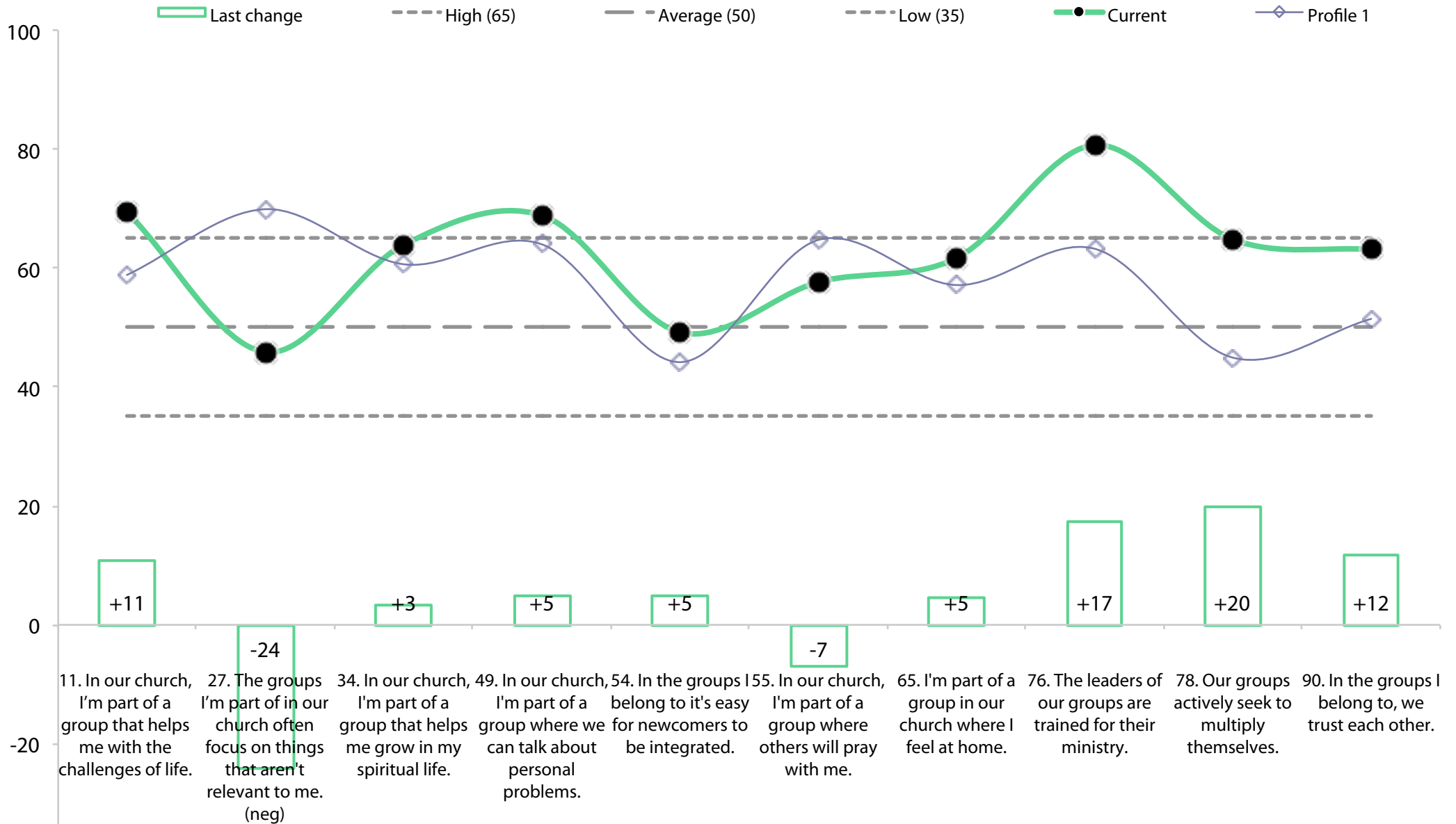
IWS Dynamic progress



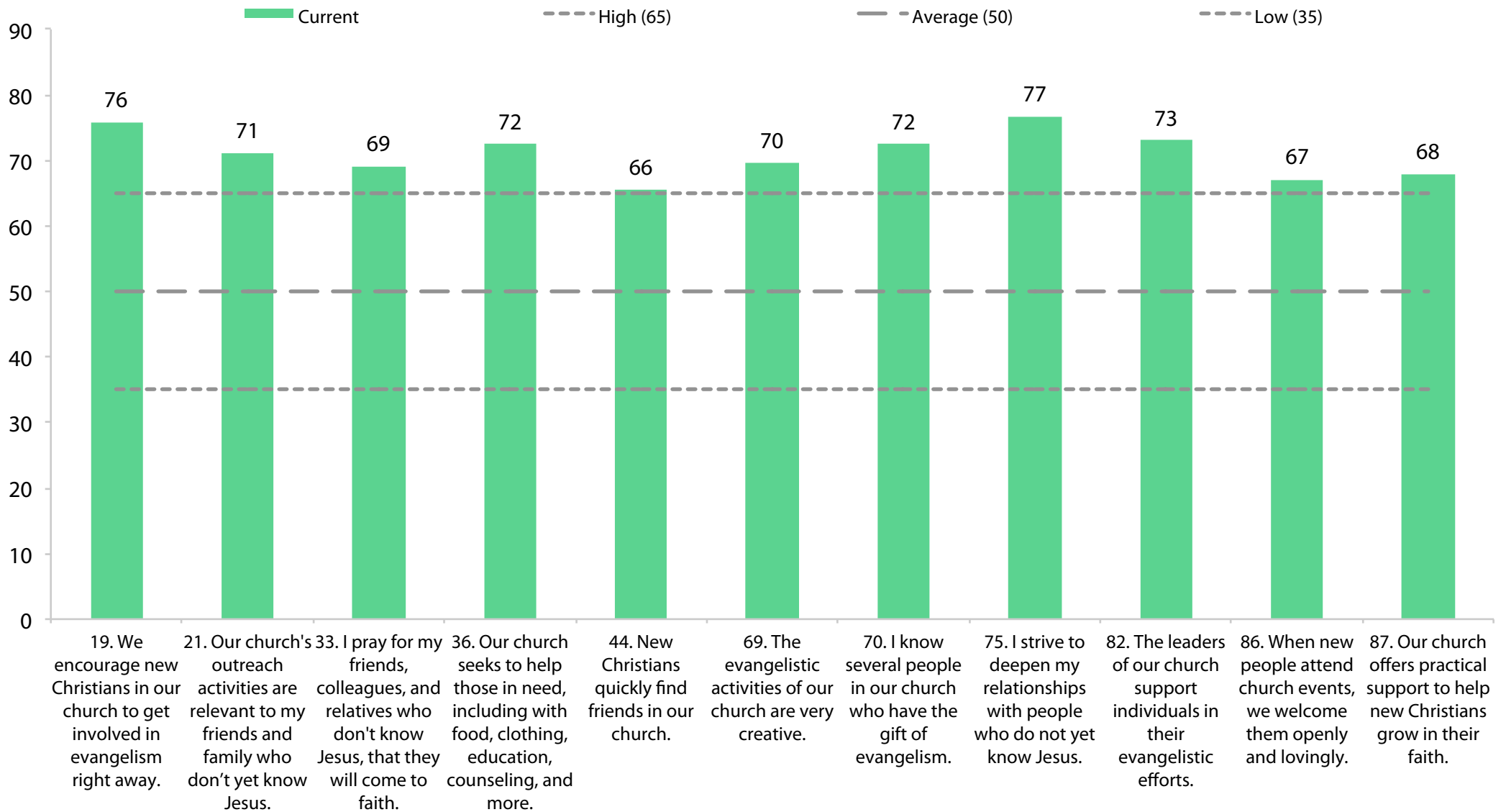
Holistic Small Groups Current Profile



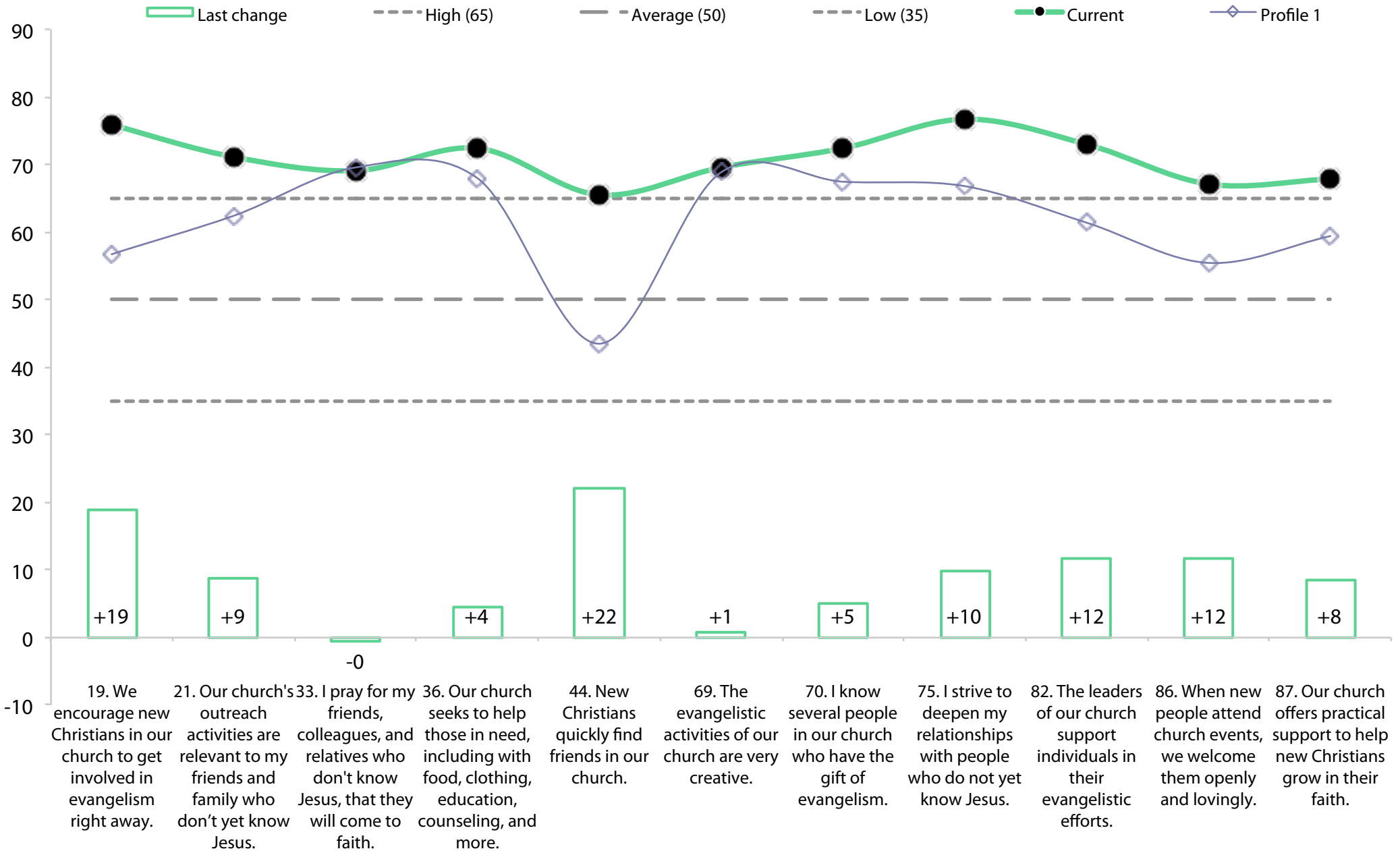
HSG Dynamic progress



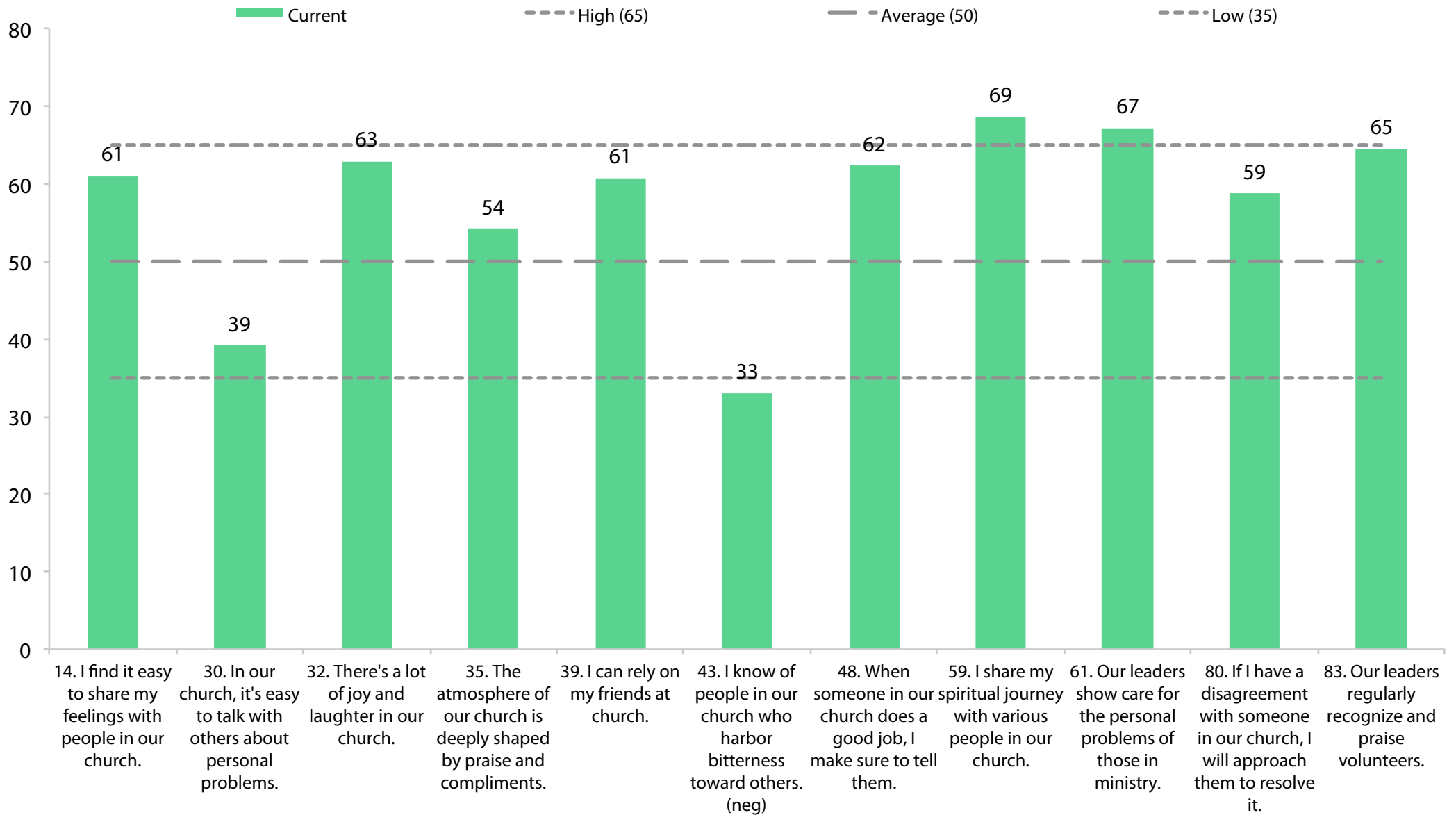
Need-oriented Evangelism Current Profile



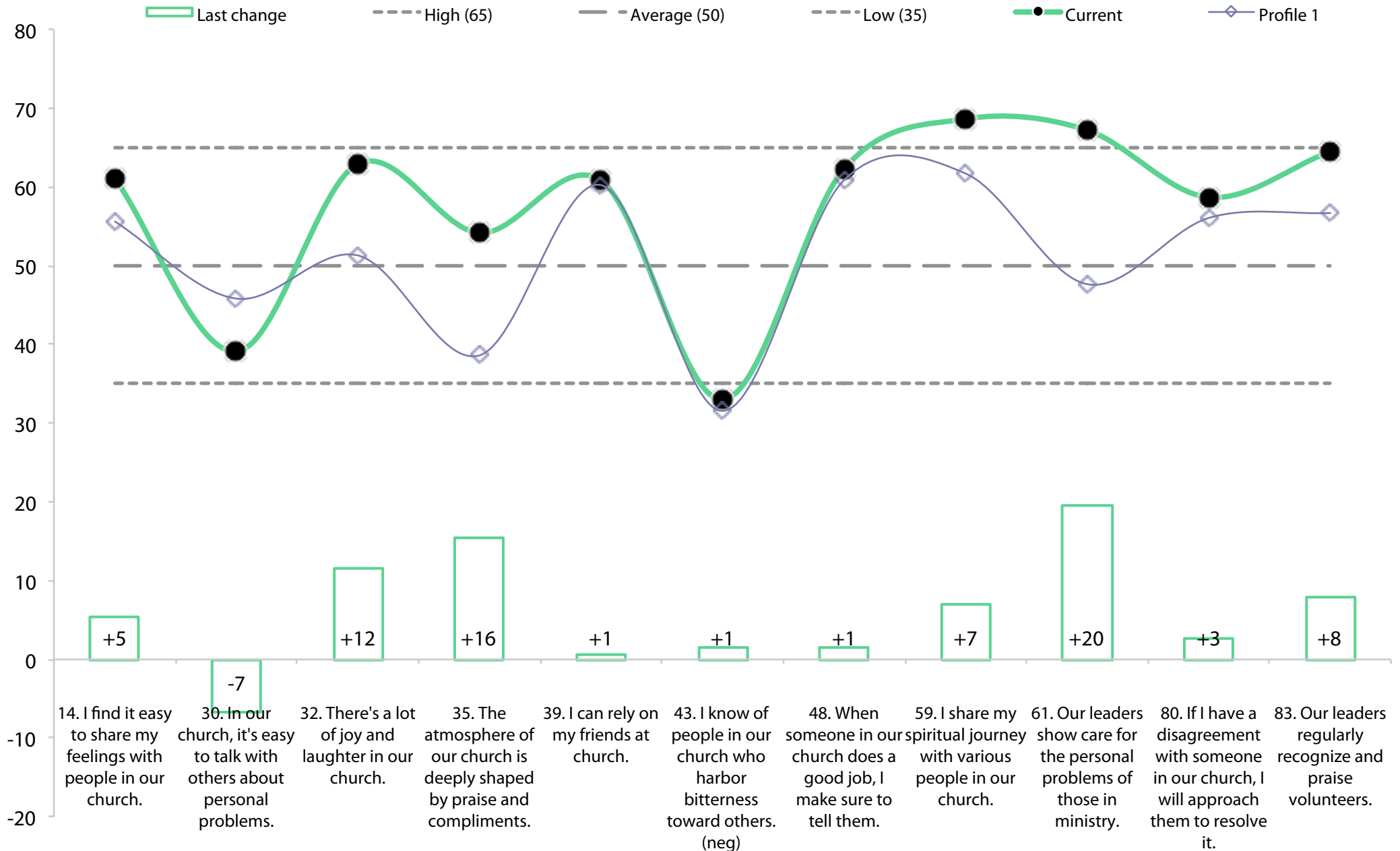
NoE Dynamic progress



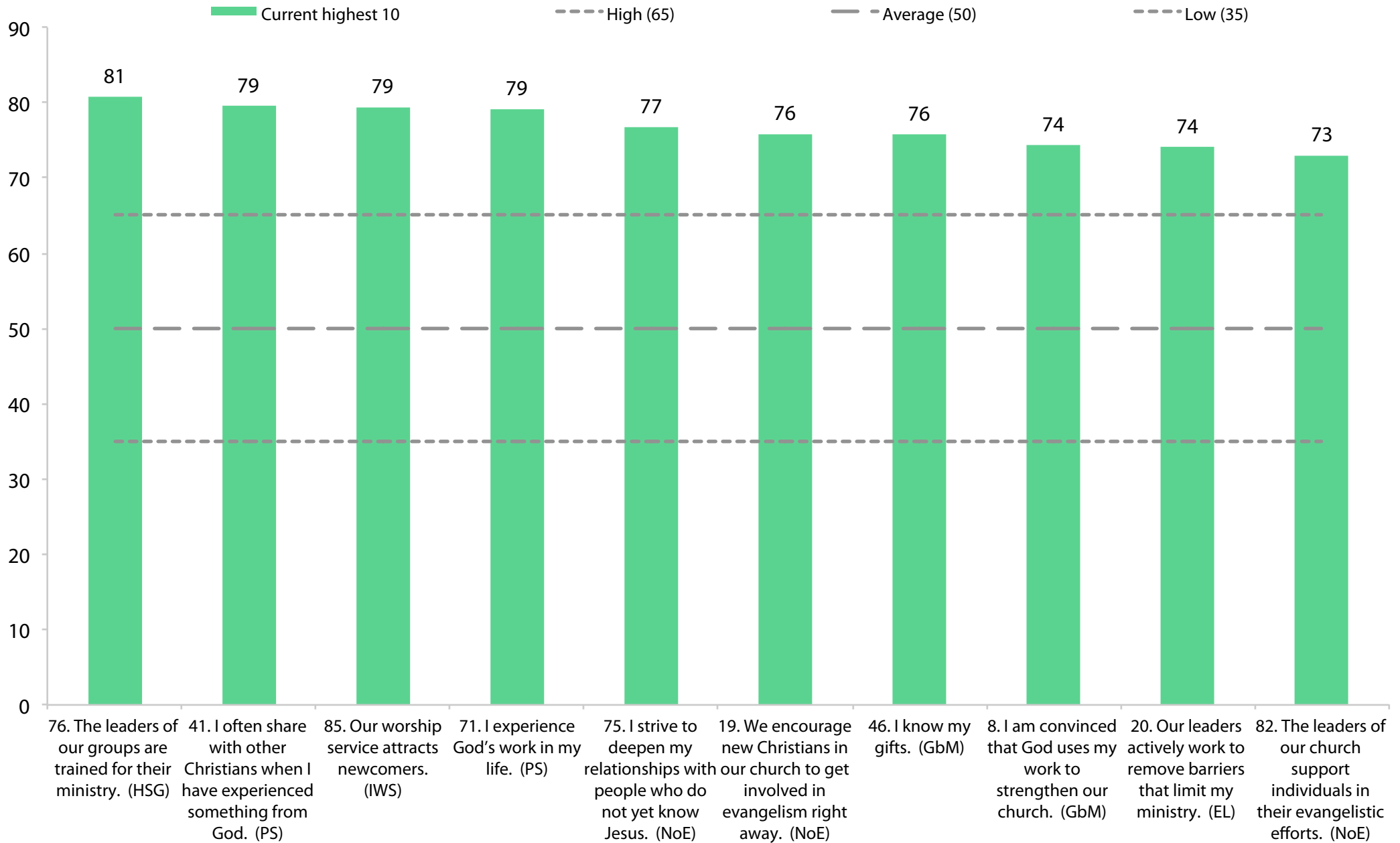
Loving Relationships Current Profile



LR Dynamic progress

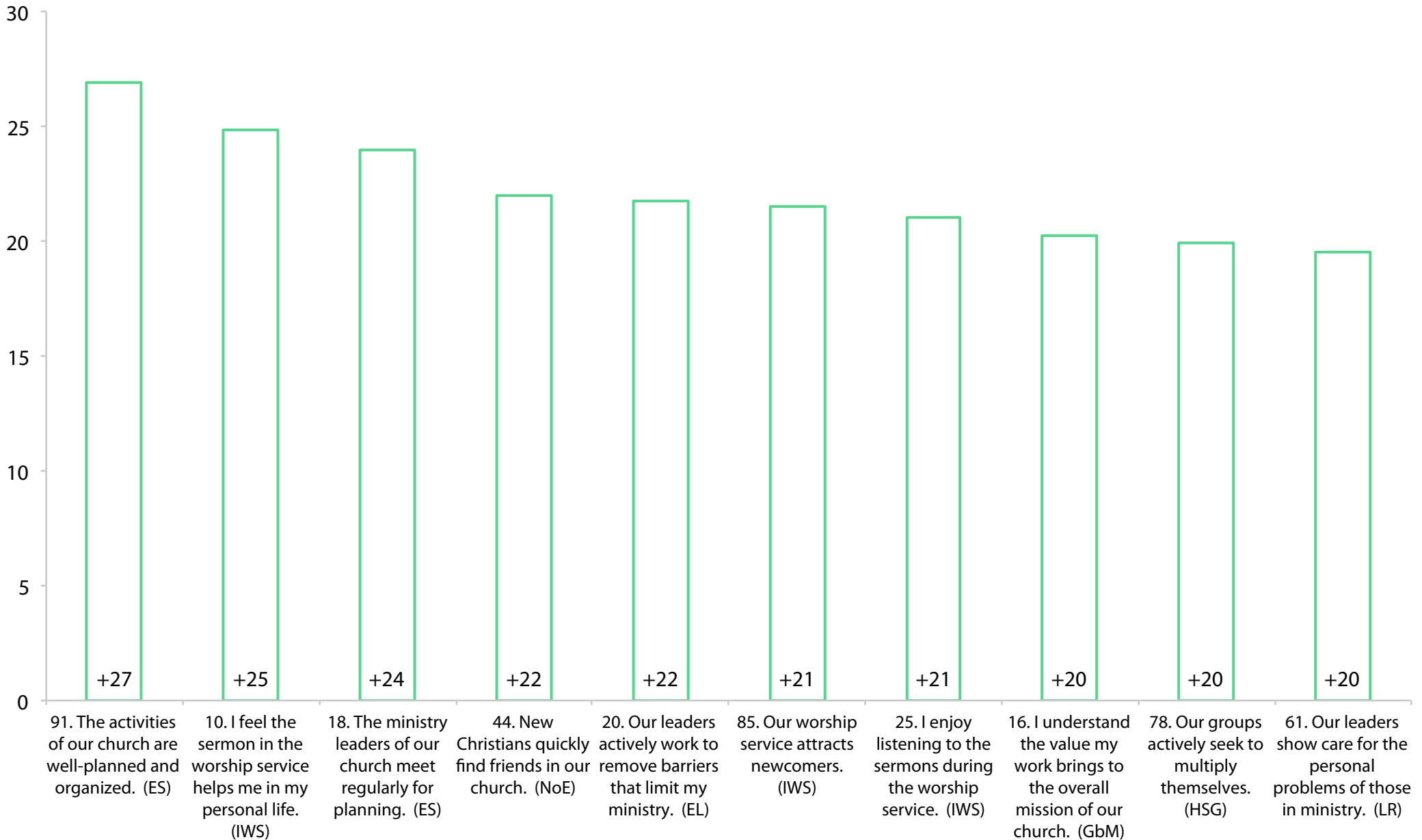


Current highest 10

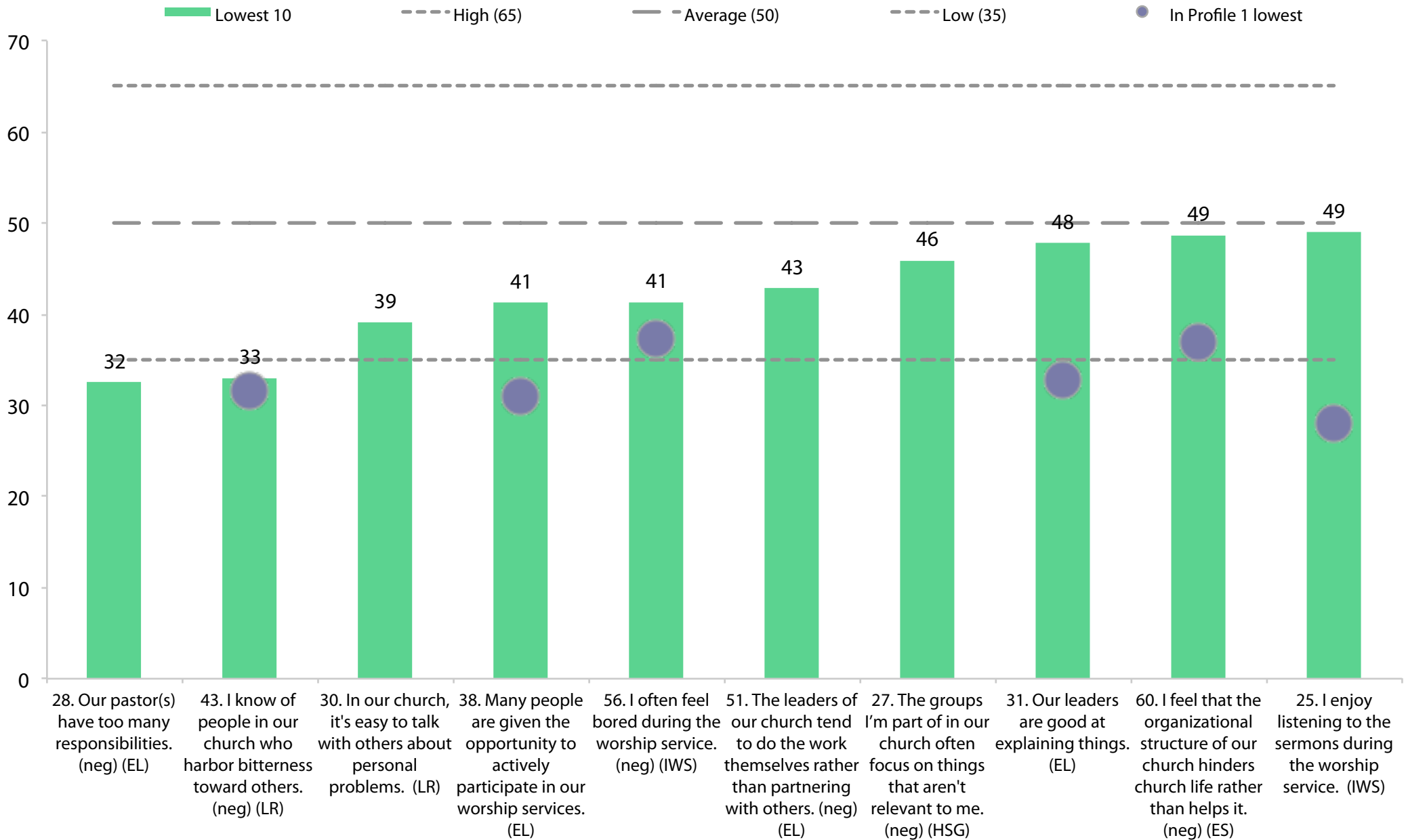




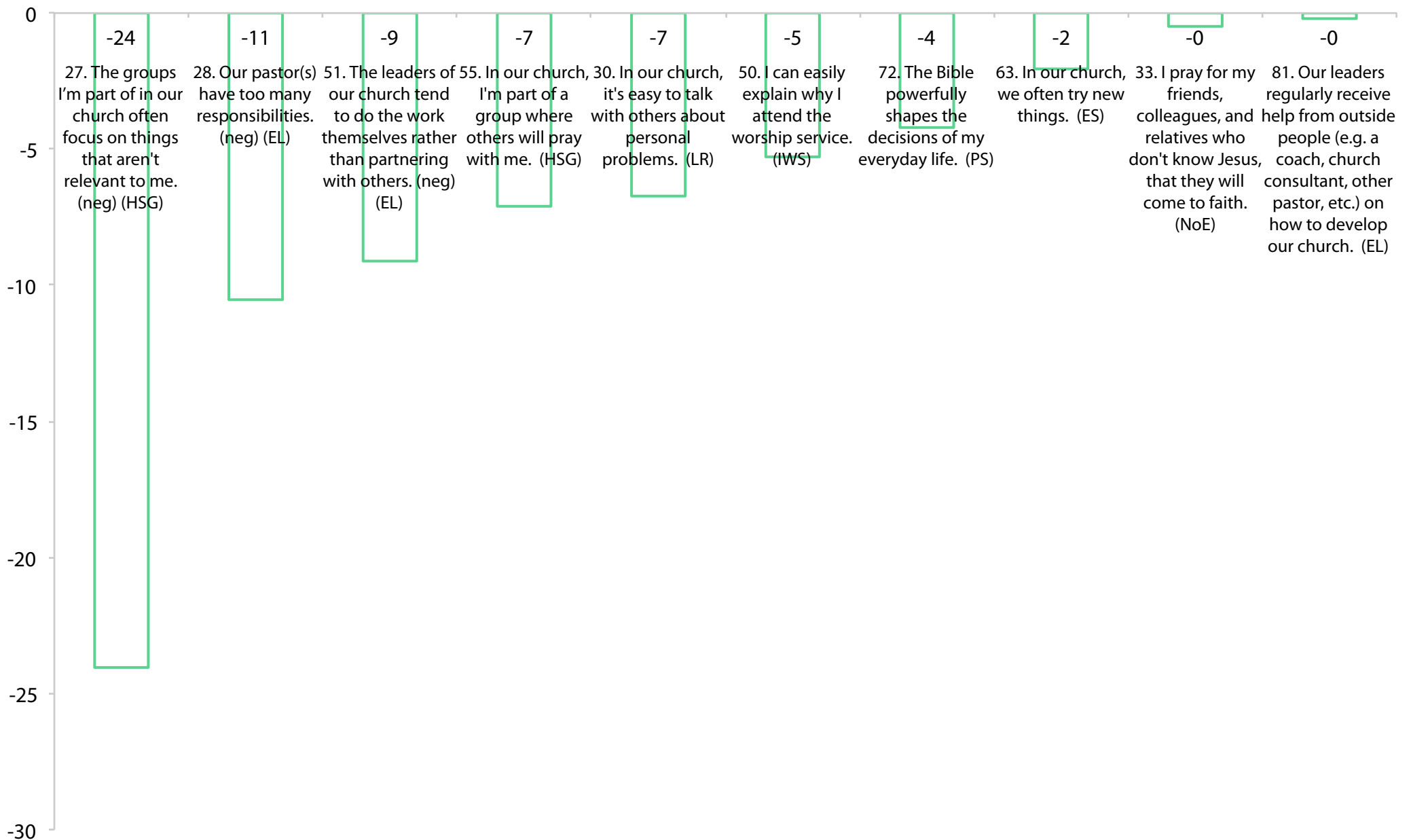
Highest 10 changes from previous to current



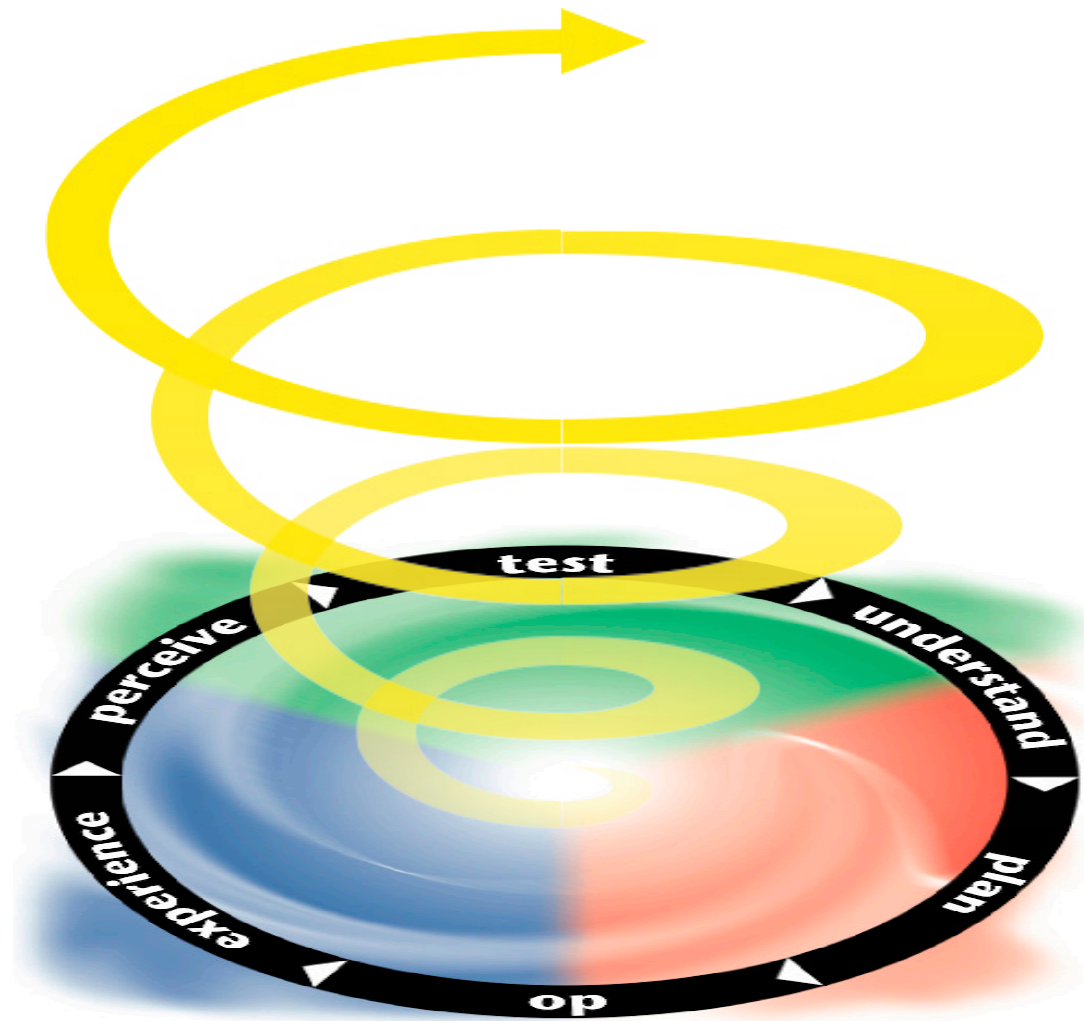
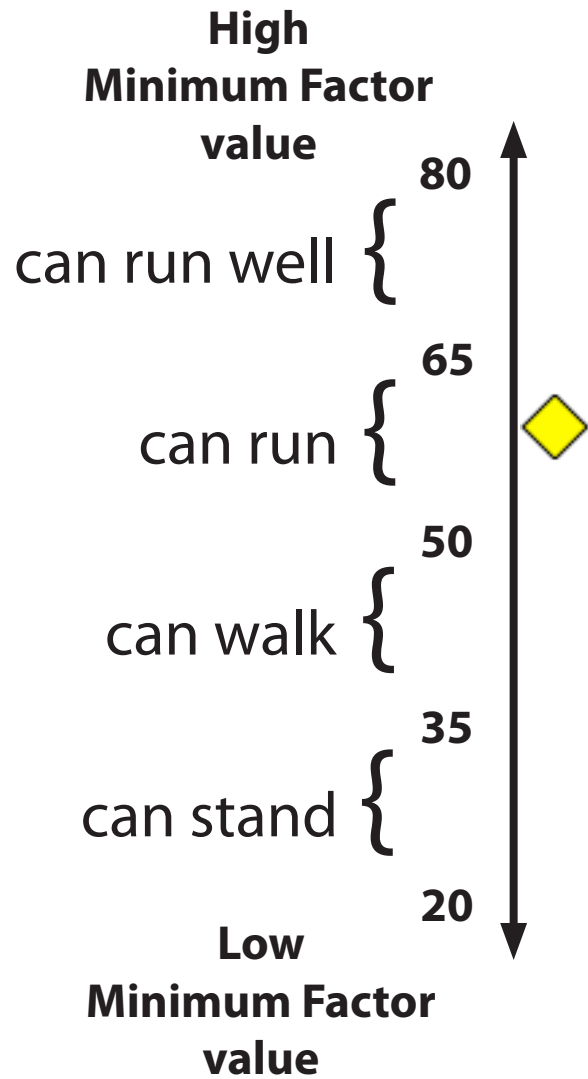
Current lowest 10



Lowest 10 changes from previous to current



Current Capacity



Loving Relationships

My Cycle Starter Plan

Our current challenges

Fellowship

Loving Relationships

relevance

creativity

multiplication

"Closing the back door"

**Beyond reasonable doubt,
which of the above do you personally
need to explore further
for the sake of your church?**

www.ncdchurchsurvey.org/cycle-starters

